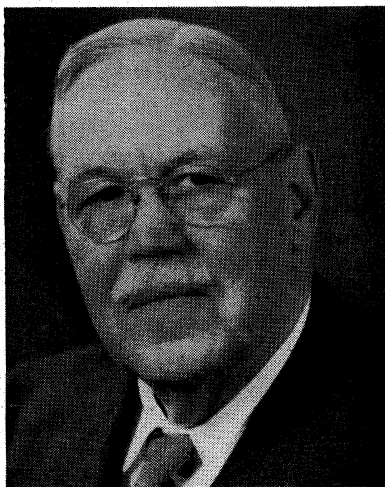


J. MARION SHULL

■ THE NAME of J. Marion Shull appears in the list of charter members of the American Iris Society organized 25 years ago. His interest in flowers, including iris, began in his boyhood days in Ohio. Plants were collected, not as a botanist collects them but as materials for application to design. This was the beginning pattern of his life work as botanist-illustrator in the United States Department of Agriculture where he served so many years. In this chosen field he is credited with more than 1,700 scientific drawings in color covering a wide range of subjects.

Many members of this Society have visited at his home at Chevy Chase, Md., where he started his iris garden by transferring iris from his boyhood home. These he supplemented with iris purchases from Bertrand H. Farr, leading iris grower of that period.



J. Marion Shull

The breeding of iris began in 1914. From the numerous crosses there came VIRGINIA MOORE, which received an H. M. in 1920. A year later a brilliant seedling of *I. trojana* × LENT A. WILLIAMSON first appeared, known later as MORNING SPLENDOR. This variety has a notable list of awards, mentioned in the *Check List*, 1939. It was very popular and it carried to far places, including England, France, Australia, and New Zealand.

Other varieties originated by Mr. Shull are JULIA MARLOWE, TROPIC SEAS, SEQUOIAH, COPPERSMITH, and DUNE SPRITE. He is the author of *Rainbow Fragments*, a handsomely illustrated book on iris. His contributions to the BULLETIN comprise 31 items, of which the first appeared in BULLETIN No. 7 and the last in No. 94.

Mr. Shull has been keenly interested in flowers all his life. He has made notable crosses in day lilies in addition to those in iris.

—HOWARD R. WATKINS